

# Browser Settings for Online Searching

When you explore the Internet, your web browser may be set to save copies of the pages you visited to your hard drive. When you revisit a web site, instead of downloading the page again, the browser loads the copied version of the page. This saves time and makes your web browsing much faster.

Generally, this is a useful feature. However, it can cause problems when searching online databases such as OvidWeb. In some cases, instead of displaying the new results of your search, the web browser displays the older copy of the page it saved to your hard drive from a previous visit. Fortunately, if you are experiencing this situation, it is very easy to correct.

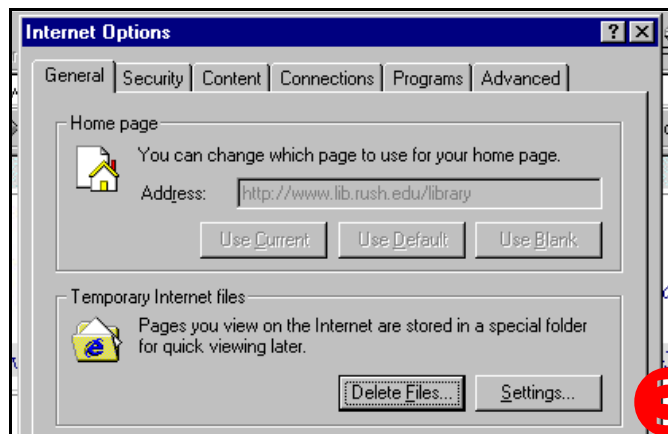
## Microsoft Internet Explorer Version 5.5

1. Open Internet Explorer and go to the **TOOLS** pull-down menu.



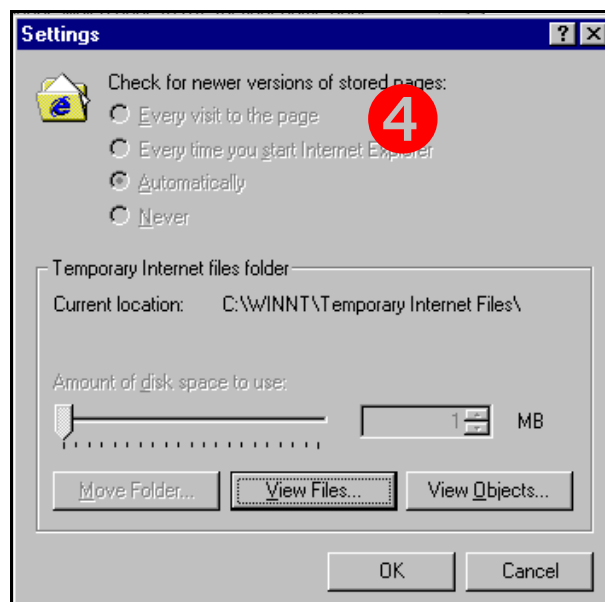
2. Select **INTERNET OPTIONS**.

3. Click on **SETTINGS**



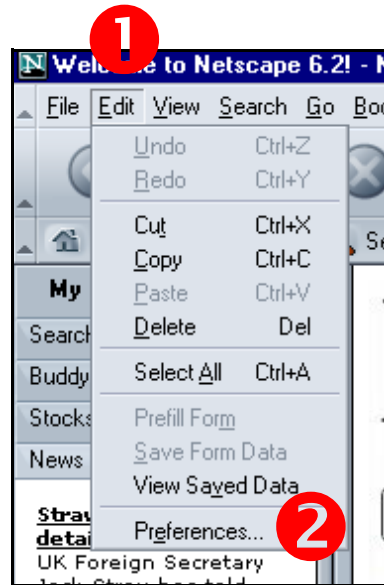
4. Select **EVERY VISIT TO THE PAGE**.

Click **OK** to exit.



## Netscape Version 6.2

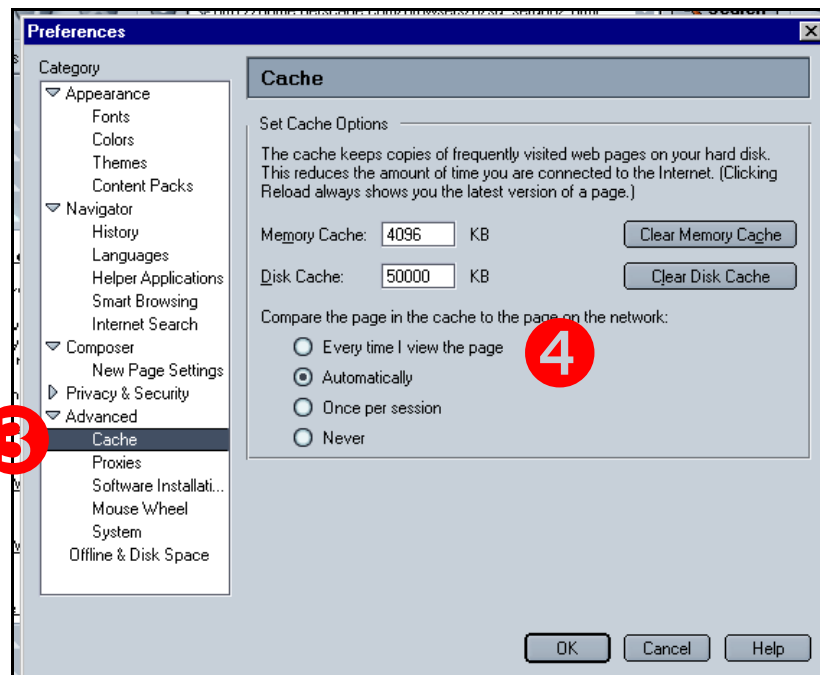
1. Open Netscape the **EDIT** pull-down menu.
2. Select **PREFERENCES**.



3. Go to **ADVANCED** and select **CACHE**.

4. Change the option to **Every Time I View The Page**.

Click **OK** to exit.



### THE LIBRARY OF RUSH UNIVERSITY & MCCORMICK EDUCATIONAL TECHNOLOGY CENTER

The Library of Rush University  
Armour Academic Center, 5th Floor  
600 South Paulina Street  
Chicago, IL 60612

Telephone:(312) 942-5952  
Fax: (312) 942-3143  
Lib\_Ref@rush.edu

We're on the Web  
[www.lib.rush.edu/  
library](http://www.lib.rush.edu/library)