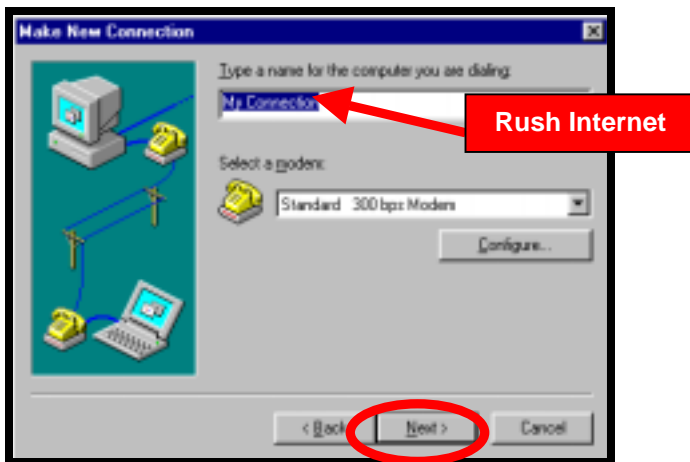


# Dial-up Networking (DUN) Settings on a PC

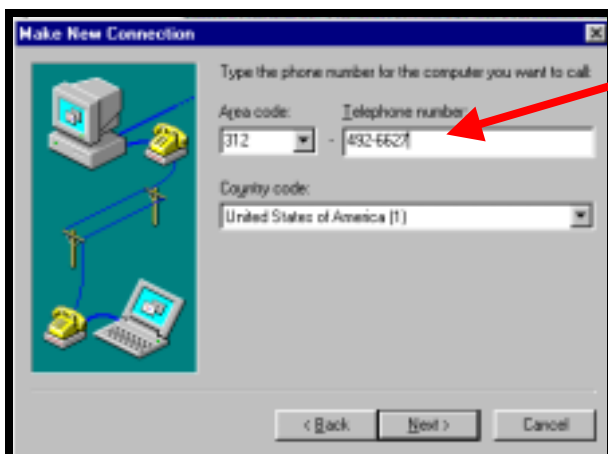
McCormick Educational Technology Center • Library of Rush University  
919 Armour Academic Center Chicago, Illinois 60612



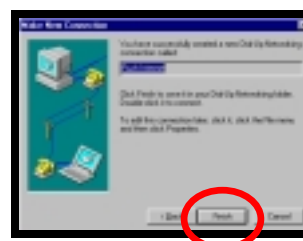
- Double-click on **My Computer** on your desktop
- Double-click on the **Dial-Up Network** icon to open the dialog box.
- Click on **File ... Make a New Connection** A Microsoft Wizard set of dialog boxes opens.
- Firstly, the Wizard asks you to give a name for the computer you are dialing, here you can type in something like "**Rush Internet**".



- The Wizard also asks you to select the device, or modem. **The default is usually the one that is correct. Do not change the default modem unless there is no modem listed.** If you are unsure of what modem you have, consult your computers' handbooks or call 312.942.HELP (the I.S. help desk) for help determining the type of modem you have.



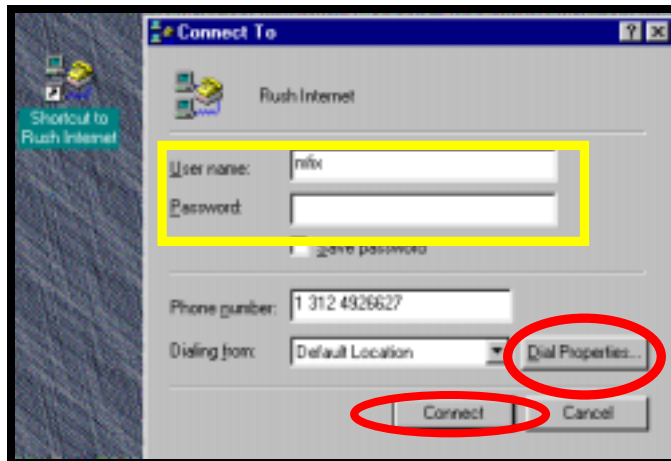
- Click on the **Next** button to enter the dialup number.
- Type in the RPSLMC dial-up number, **312-492-6327** (for unsecure accounts - you will know if you have a Secure account. If you don't know, then you don't have one). Click on **Next**.



- Click on **Finish**.

- After completing the wizard, the dial-up connection will be located in the Dial-up Networking Folder. Right click on this icon and select "Create Shortcut" to set up a shortcut on the desktop.
- You can now launch your dial-up connection to the RPSLMC Internet. **You need to put your username and password given to you by Information Services in the Username and Password box when you launch (double-click) on your dial-up connection shortcut. If you are dialing from outside of the (312) area code you need to do the following:**

- Click on **Dial Properties ...**
- Click on **New ...** and enter a name for your location, such as "Home" or "Home Phone".
- Enter your area code. If your call is long distance, you can purchase an Internet Service Pack from your local phone company that can potentially cut down on what your phone bill would be if you made a number of long distance calls to the RPSLMC Internet server.



- Click on **OK**.
- Click on **Connect**.
- **When you dial, open up the Dial-Up Network Settings shortcut icon, click on Connect, and enter your username and password (that I.S. has assigned you) in lower case letters.**

**NOTE: In Windows 2000, the Dial-Up Network Settings Wizard might ask you to select one of three options to try to get you to sign up with another Internet Service Provider. Select the third option, "Establish my own connection."**

